

# LOOK BOOK 2024



*"Inspiring Creative Spaces"*



## WELCOME

This brochure showcases our extensive range of UK furniture and interiors. We've gathered all of our most popular ranges to help inspire and create the ideal workspace. If you need additional assistance, our in-house design team is available for consultation, and we offer a free space planning service to create 2D and 3D plans for your space.

Our furniture and interiors range is carefully curated to cater to a variety of tastes and preferences. Whether you're looking for classic or contemporary piece, we have something that will suit your needs. From modern sit-stand desks and ergonomic chairs to comfortable sofas and compact coffee tables, we offer a wide selection of furniture that is both stylish and functional.

We understand that every space is unique, and that's why we offer a free space planning service to all our customers. Our experienced design team will work closely with you to create 2D and 3D plans that are tailored to your specific requirements. We'll help you make the most of your space, and ensure that your furniture and interiors work together to create a cohesive and stylish look.

So why not take a look at our Look Book Brochure and start exploring our extensive range of furniture and interiors. We're confident that you'll find something that you love, and our team is always on hand to offer advice and guidance whenever you need it.



# CONTENTS

---

- 🎯 DESKING
- 🎯 STORAGE
- 🎯 TASK CHAIRS
- 🎯 SOFT SEATING
- 🎯 CANTEEN & BREAKOUT
- 🎯 MEETING
- 🎯 ACOUSTICS
- 🎯 RECEPTION DESKS
- 🎯 COLOUR INSPIRATION



## DESKING

- LEAP SIT-STAND
- ZOOM SIT-STAND
- ROUND SIT-STAND
- BAMBOO SIT-STAND
- C-SENSE BENCH
- ASHFORD SINGLE
- ASHFORD HOME
- KOMO SINGLE
- FERMO EXECUTIVE
- GRAND EXECUTIVE
- SORENO EXECUTIVE
- KOALA ACOUSTIC SCREENS
- DESK ACCESSORIES
- MONITOR ARMS





# LEAP SINGLE

by Levanta

Leap is the future of desking, providing many benefits to employee health and productivity. Our range of sit-stand desks can be electrically adjusted to sitting or standing height preventing problems associated with prolonged sitting.



**Available Sizes**  
Depths: 700 & 800mm  
Widths: 1200, 1400, 1600 & 1800mm

**Top Options**  
Plain, Portal or Scallop





# LEAP BENCH

by Levanta

Leap Bench features the same adjustability as the Leap Single desk but in a two person bench system. Each user can adjust their own desk height via the memory master control unit.

#### Available Sizes

Depths: 700 & 800mm  
Widths: 1200, 1400, 1600 & 1800mm

#### Top Options

Plain, Portal or Scallop





# LEAP RADIAL | K TOP

by Levanta

Leap Radial ergonomic desk is commonly used in work environments and presents a flexible design which can be used to create endless configurations to build the perfect office layout.

Leap Radial desks can be used to utilise corner space in the office or in combinations to create cluster desks for either 2 or 4 workstations.



**Available Sizes**  
Sizes: 1600 x 1200, 1800 x 1200mm

**Top Options**  
Portal





# LEAP L-EXTENSION

by Levanta

Leap L-Extension frame is perfect if you want to add extra desktop space to your existing Leap Desk. The extension frame attaches to your single frame to create an L shaped sit-stand desk.



**Available Sizes**  
Depths: 600mm  
Widths: 1000mm

**Top Options**  
Plain, Portal or Scallop



# ZOOM SINGLE

by Levanta

Zoom Frame is a stand-alone desk frame that can be combined with any desktop that meets the measurement criteria. Once the desktop is mounted, it has all the power of Zoom Sit Stand desk, including flexible transitions to height settings of your choice.



**Available Sizes**  
Depths: 700 & 800mm  
Widths: 1200, 1400, 1600 & 1800mm

**Top Options**  
Plain, Portal or Scallop





# ROUNDE

by Levanta

RoundE is a compact, space-saving solution ideal for small or home office environments. The RoundE sitstand desk adjusts from a height of 685mm to 1245mm (without a desktop) with the easy-to-use handset.



**Available Sizes**  
Depths: 700 & 800mm  
Widths: 1200, 1400, 1600 & 1800mm

**Top Options**  
Plain, Portal or Scallop



# BAMBOO SINGLE

by Levanta

The most environmentally friendly sit-stand desks available. Strong, beautiful and sustainable, Bamboo is the go-to material for eco-friendly manufacturing. Our bamboo desktop doesn't just make a sustainable statement, it's beautiful too with unique grain striations and stunning edge detailing.



**Available Sizes**  
Depths: 800mm  
Widths: 1200, 1400 & 1600

**Top Options**  
Curved Portal  
Straight Portal





# C-SENSE

C-Sense is a bench desking range designed by Edit Office. The high quality, cost-effective desk range is available in either single or bench with the option of 1200, 1400 and 1600mm tops. Choose from a variety of top and frame colours to suit any office environment. Whether designing or restructuring an office the C-Sense desk range offers great value and quality design.



**Available Sizes**  
Depths: 600, 700 & 800mm  
Widths: 1000, 1200, 1400, 1600 & 1800mm

**Top Options**  
Plain, Portal or Scallop



# ASHFORD TWIN LEG

Ashford Twin Metal legs are manufactured from 16 gauge steel and powder coated in three colours. All desk tops and panel legs are constructed from E1 grade heat and scratch resistant 25 mm melamine panels.



#### Available Sizes

Depths:  
Widths:

#### Top Options

Straight Portal  
Crescent Portal  
Wave Portal



# ASHFORD SINGLE LEG

Ashford Metal legs are manufactured from 16 gauge steel and powder coated in three colours. All desk tops and panel legs are constructed from E1 grade heat and scratch resistant 25 mm melamine panels.



#### Available Sizes

Depths:  
Widths:

#### Top Options

Straight Portal  
Crescent Portal  
Wave Portal





# ASHFORD PANEL LEG

All desk tops and panel legs are constructed from E1 grade heat and scratch resistant 25 mm melamine panels.



#### Available Sizes

Depths:  
Widths:

#### Top Options

Straight Plain  
Return Plain  
Crescent Plain  
Wave Plain



# ASHFORD HOME

Ideal for a small or home office and designed to fit in almost any space. This compact desk comes in trendy wood finishes and you can choose from two stylish leg options.



**Available Sizes**  
Depths: 700mm  
Widths: 1200mm

**Leg Options**  
Straight Portal  
K Portal



# KOMO

Komo is a highly flexible system with integrated cable management hidden neatly in its legs. Metal to metal fixings allow for simple re-configuration, while elegantly curved tops complete with pearl nickel aluminium portals add that all important finishing touch.



#### Available Sizes

Depths:  
Widths:

#### Top Options

Straight Portal  
Crescent Portal  
Crescent Portal With Pedestal  
Wave Portal







# FERMO EXECUTIVE

Aluminium leg to top connections and handles finish off a truly exquisite executive system. Fermo desk tops have a 36mm thickness..

**Available Sizes**  
Depths: 900mm  
Widths: 1600 or 1900mm

**Top Options**  
Plain





# GRAND EXECUTIVE

The Grand design emphasizes the unique character of the arranged room and is of the highest quality of workmanship.

**Available Sizes**  
Depths: 900mm  
Widths: 1800mm

**Top Options**  
Plain

**Storage Position**  
Right or Left





# SORENO EXECUTIVE

The SORENO collection is a remarkable variation on the classic form of office furniture. The desk intrigues and at the same time gives the furniture a light touch.

**Available Sizes**  
Depths: 730mm  
Widths: 2210mm

**Top Options**  
Plain

**Direction**  
Right or Left





# KOALA ACOUSTIC SCREENS

Made from premium acoustic panels and recycled PET material (recycled bottles), these screens are designed to reduce noise levels while providing desk users with the privacy they need. Upgrade your office environment with these high quality screens!

**Available Sizes**  
Height: 400 mm  
Widths: 800, 1000, 1200, 1400,  
1600, 1800 mm

**Pattern Options**  
13 unique designs

**Finishes**  
24 Koala Colours





# DESK ACCESSORIES

---

Our desk cable management solutions range from discrete under table basket style cable trays to sleek vertical cable spines giving you great options to choose from at amazing prices. Office desk management is imperative to a productive work environment and our cable management systems are designed to make your work life easier.

**Options**  
Narrow or Wide Cable basket  
Laptop Riser  
CPU Holder  
Cable Sleeve



Leap Monitor Arms



Stealth Monitor Arms



Emma Monitor Arms



# MONITOR ARMS

Monitor arms attach to desks and provide convenience, comfort, and ergonomics in your office / home office. They are height adjustable to suit your needs! Set screens at eye-level at arm's length for optimum ergonomics.

**Options**  
Single or double



# STORAGE

- MODA PEDESTALS
- SURFACE PEDESTALS
- KITO PEDESTALS
- KITO STORAGE
- SOVE LOCKERS
- WUTEH LOCKERS





# MODA PEDESTALS

Moda under desk pedestals offer a stylish round corner feature. These pedestals have three spacious drawer cabinets that are ideal for any office and perfect for organising files and locking away personal items.



**Available Sizes**  
Moda L 535d x 300w x 580h  
Moda Plus 535d x 390w x 580h

**Colour Options**  
White, Silver and Black



DESIGNER METAL CORNERS





## SURFACE PEDESTALS

Surface Pedestals embrace the modern trend with a minimalist look drawer front without any handles. Drawers are easily opened by using the overlap drawer front.

**Available Options**  
Low mobile 2 drawer ped  
Low mobile 3 drawer ped  
High mobile 3 drawer ped





## KITO PEDESTALS

---

Simple, affordable storage collection in a wide range of sizes and finish options. This diverse range can be used on its own or to accompany our Switch, Komo or Ashford ranges, as well as complementing our Morph training and Kito meeting tables.

**Available Options**

Low mobile 2 drawer ped  
Low mobile 3 drawer ped  
High mobile 2 drawer ped  
High mobile 3 drawer ped





# KITO STORAGE

Simple, affordable storage collection in a wide range of sizes and finish options. This diverse range can be used on its own or to accompany our Switch, Komo or Ashford ranges, as well as complementing our Morph training and Kito meeting tables.

**Available Sizes**  
Height: 725, 770, 1130, 1490, 1850 and 2210mm  
Widths: 800mm





# SOVE LOCKERS

Modern wardrobe/lockers for any office or cloakroom. Sove lockers are stylish and are designed to offer secure locker space for any personal items or outerwear.

#### Available Options

2 door cloakroom wardrobe  
Mini lockers available in single or double cupboard option





# WUTEH LOCKERS

Fully customisable lockers from lock type, colour, position of lock and door type. You can create your perfect storage solution that will cater towards your employees and office needs.

**Available Options**  
Single Locker  
Double Locker  
3 compartments Locker



# SEATING

- NV
- NV VINYL
- NV MESH
- X.11
- X.22
- X.44
- X.77
- OA MESH
- ANDY
- OV
- SESTRI
- EVOLUTE
- OA SERIES
- OB SERIES
- OE SERIES
- OE24HR
- POSITURA
- DUOREST 2.0
- DUOREST GOLD







# NV

The unique curved backrest is designed to perfectly align, support and protect your spine, back and neck while working. The high-quality 3D mesh covers the backrest, enhancing the air circulation and allowing you to sit at your desk in comfort. The NV chair also offers a range of motion. The chair can swivel 360 degrees and can be tilted back from the upright position. Both the seat and armrest can also be adjusted in height to find your perfect working position.

**Chair Colour**  
White, Black and Grey

**Seat Fabric**  
Black, Red, Green, Light Blue,  
Dark Blue and Grey

**Headrest**  
Optional



# NV VINYL

Experience comfort and style with the NV Black Vinyl. Let the breathable mesh back and plush vinyl seat be a new addition to your office. The sleek vinyl fabric is very easy to wipe down and will compliment any office environment.



**Chair Colour**  
White, Black and Grey

**Headrest**  
Optional



# NV MESH

An exceptional all-mesh office chair. Experience comfort and style with the NV Mesh, a combination of contemporary design and a range of ergonomic features backed by a 5-year guarantee.



**Chair Colour**  
Black

**Headrest**  
Optional



# X.11

X.11 horizontal mesh back operator chair is designed with comfort and ease in mind. Synchro-tilt mechanism allows the backrest and seat to tilt in unison. X.11 also features adjustable arms and gas lift for easy adjustment. The chair features a breathable mesh back with horizontal stripes for a modern and eye-catching look.



**Chair Colour**  
Black

**Headrest**  
No



# X.22

A visually stunning design that offers comfort and simplicity. The X.22 ergonomic chair is designed with a foam-comforting breathable mesh backrest and multiple adjustment features that provide excellent support while you work. The chair comes with adjustable lumbar support to keep the spine aligned in a neutral position and maintain good posture for a healthy back and spine.



**Chair Colour**  
Black

**Headrest**  
No





# X.44

A visually stunning design that offers comfort and simplicity. The X.22 ergonomic chair is designed with a foam-comforting breathable mesh backrest and multiple adjustment features that provide excellent support while you work. The chair comes with adjustable lumbar support to keep the spine aligned in a neutral position and maintain good posture for a healthy back and spine.



**Chair Colour**  
Black

**Headrest**  
Optional



# X.77

A visually stunning design that offers comfort and simplicity. The X.22 ergonomic chair is designed with a foam-comforting breathable mesh backrest and multiple adjustment features that provide excellent support while you work. The chair comes with adjustable lumbar support to keep the spine aligned in a neutral position and maintain good posture for a healthy back and spine.



**Chair Colour**  
Black

**Headrest**  
Optional







# OA MESH

The O.A Task delivers a quality upholstered operator chair with deep profiled foams ensuring lumbar support and maximum comfort.

**Chair Colour**  
Black

**Armrest Options**  
No Arms  
Fixed Arms  
Adjustable Arms

**Headrest**  
No



# ANDY

Made from high-quality mesh the Andy chair is designed to look good and support the user while they work. The Andy chair offers lumbar support for added user comfort and is a perfect option for home offices or large working offices.



**Chair Colour**  
Black or White

**Headrest**  
No





# OV

---

The OV is suitable for a wide range of environments. A seat with ergonomic contours, adjustable armrests, and a higher backrest contribute to enhanced sitting comfort, particularly during extended periods.

**Chair Colour**  
Black

**Armrest Options**  
No Arms  
Fixed Arms  
Adjustable Arms

**Headrest**  
No





# SESTRI

---

Sestri has a traditional oval shaped back design with high density seat and back foam for maximum user comfort. With so many adjustable settings, the Sestri chair offers the ideal configuration for any office professional and will help decrease aches and pains associated with improper support.

**Chair Colour**  
Black

**Armrest Options**  
No Arms  
Adjustable Arms

**Headrest**  
No





# EVOLUTE

Evolute encourages a better posture with its built in adjustable lumbar support. The chair features a deep cushioned seat and contoured backrest that ensures ultimate comfort while you work. Evolute is also equipped adjustable backrest, seat, armrests and lumbar support.

**Chair Colour**  
Black and chrome base

**Armrest Options**  
No Arms  
Adjustable Arms

**Headrest**  
No





## OA SERIES

OA Task delivers a quality upholstered operator chair with deep profiled foams, lumbar support and maximum comfort. The contoured seat, back height and adjustable arms increase the comfort of sitting especially for long periods of time.

**Chair Colour**  
Black

**Armrest Options**  
No Arms  
Fixed Arms  
Adjustable Arms

**Headrest**  
No





# OB SERIES

---

OB offers a fully customisable seating solution. Users can easily adjust the chair to fit their needs. The chair has 3 lever multi-functional mechanism with user weight tension control and supportive height-adjustable armrests.

**Chair Colour**  
Black  
chrome base

**Armrest Options**  
No Arms  
Fixed Arms  
Adjustable Arms

**Headrest**  
No





## OE SERIES

If you are looking for a large durable multifunction operator chair then look no further than the OE Series. Deep contoured high density recycled foams offer durability that's environmentally friendly.

**Chair Colour**  
Black  
chrome base

**Armrest Options**  
Adjustable Arms

**Headrest**  
No





# OE24

---

A 24-hour test certified multi-functional operator chair. Deep contoured, high density recycled foams offer comfort and durability. OE24 is an ideal chair with a height-adjustable, ergonomic, supportive curved back.

**Chair Colour**  
Black  
chrome base

**Armrest Options**  
Adjustable Arms

**Headrest**  
No





# POSITURA

---

The Positura chair offers a wide backrest lumbar support so the chair supports you throughout the day. An integrated back tilt feature allows you to freely customise your sitting position while the deep pan cushioned waterfall seat means you remain comfortable no matter how long you are at your desk.

**Chair Colour**  
Black  
chrome base

**Armrest Options**  
Adjustable Arms

**Headrest**  
No



# DUOREST 2.0

Eco-friendly, customised and ergonomic. An ergonomic chair combined with breathable moulded foam provides a long lasting comfort. Duorest are proud and confident that this collaboration will provide you with a healthy Eco Office Life.



**Chair Colour**  
White with Black castors

**Headrest**  
Yes - Adjustable

**Armrest**  
Yes - Adjustable



# DUOREST GOLD

DUOREST GOLD chair is a fully adjustable chair; the width and height of the backrest can be adjusted to suit the user's body shape. Dual backrests move in three dimensions in response to the user's movements to support the spine and back muscles. The Self Tension Tilting Mechanism is applied to the chair so the user can recline back and has a seat movement featuring a 4:1 back to seat tilting ratio. You can also choose the optional features to adjust seat depth and headrest.



**Chair Colour**  
White with Black castors

**Headrest**  
Yes - Adjustable

**Armrest**  
Yes - Adjustable



## SOFT SEATING

- AGE
- SIGMA
- PLATINUM
- TRITOS
- KATE MOODLII
- ZOE MOODLII
- MISHELL
- MISHELL SOFT
- JEN MOODLII
- OOPS
- VOLT & SQUARE
- CHECK







# AGE

---

The Age collection is modeled on the 1970s century. The large seat and backrest make the collection very comfortable, and the metal frames they give a classic but fashionable design. Ideally used for the lobby, reception, waiting room, but also hotel rooms. Perfect for any office interior.

**Options**  
armchair, 2 seater and 3 seater.





# SIGMA

The modern and cozy reception sofa collection exudes a distinct charm in any office space, boasting a one-of-a-kind design and impeccable craftsmanship.

The Sigma modular series is well-suited for reception or waiting areas, offering a versatile selection of options and fabric finishes. It presents a chic and contemporary choice for staff rooms, reception areas, or any breakout space.

## Options

Pouffe, Armchair, 2 seater & 3 seater.  
Choose between armrests, left armrest or right armrest.





# PLATINUM

---

The timeless line of cabinet sofas and armchairs guarantees unprecedented seating comfort and above-average durability. The furniture comes standard with a decorative aluminium frame and round aluminium legs. Standard feet can be replaced by skids or an elegant C-shaped frame, as well as a frame completely made of stainless steel. Platinum, thanks to its refined form, blends perfectly with both modern and classic interiors. Versions of sofas and armchairs with high walls give an unprecedented possibility of arranging space.

## Options

Pouffe, Armchair, 2 seater & 3 seater.  
Choose between armrests, left armrest  
or right armrest.





# TRITOS

The base is made from rollers or legs made from stainless steel which additionally emphasizes the character of furniture. The change is the original reshaping of Tritos sofas and thus the arc-shaped modules can form a semicircle of a circle or a wavy line. Screen walls are a part of this collection, which may be an integral part of sofa, or as a self-standing screen which separates a chosen space from the rest of the room. It is possible to order the screen walls upholstered or with a white board on the inner part of structure.

**Options**  
24 different elements which include  
standard sofas, curved seating and screens



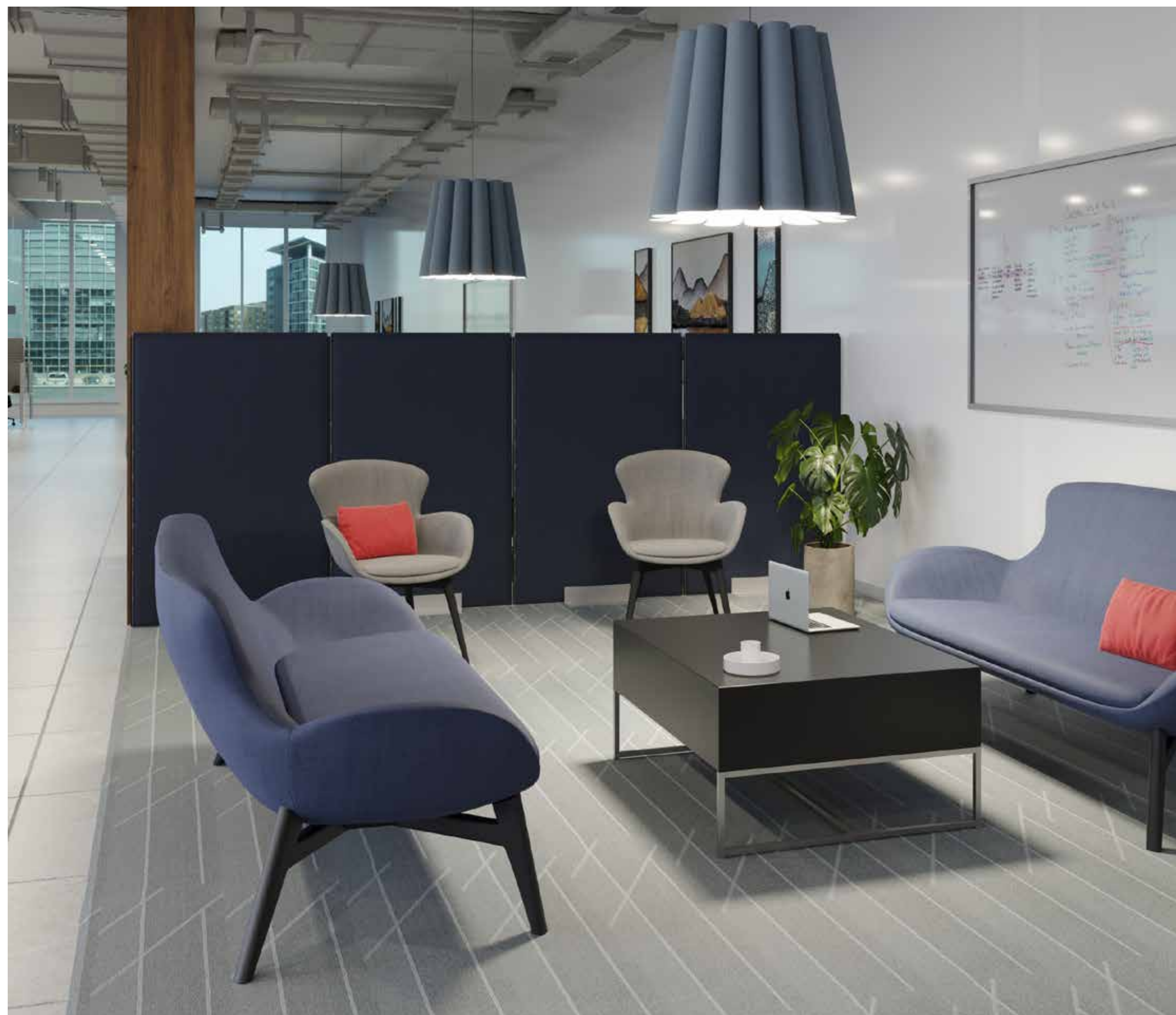
# KATE MOODLII

A timeless design that will fit perfectly into any interior. The armchair is extremely comfortable, fashionable and elegant. It fits perfectly into relaxation zones, receptions or stylish waiting rooms. In this collection, the backrests are profiled and provide lumbar support.



## Options

Both single and double versions are available with low or high backrest  
All variants of armchairs and sofas are available on a wooden frame in the colors of anthracite, nature beech, black, wenge



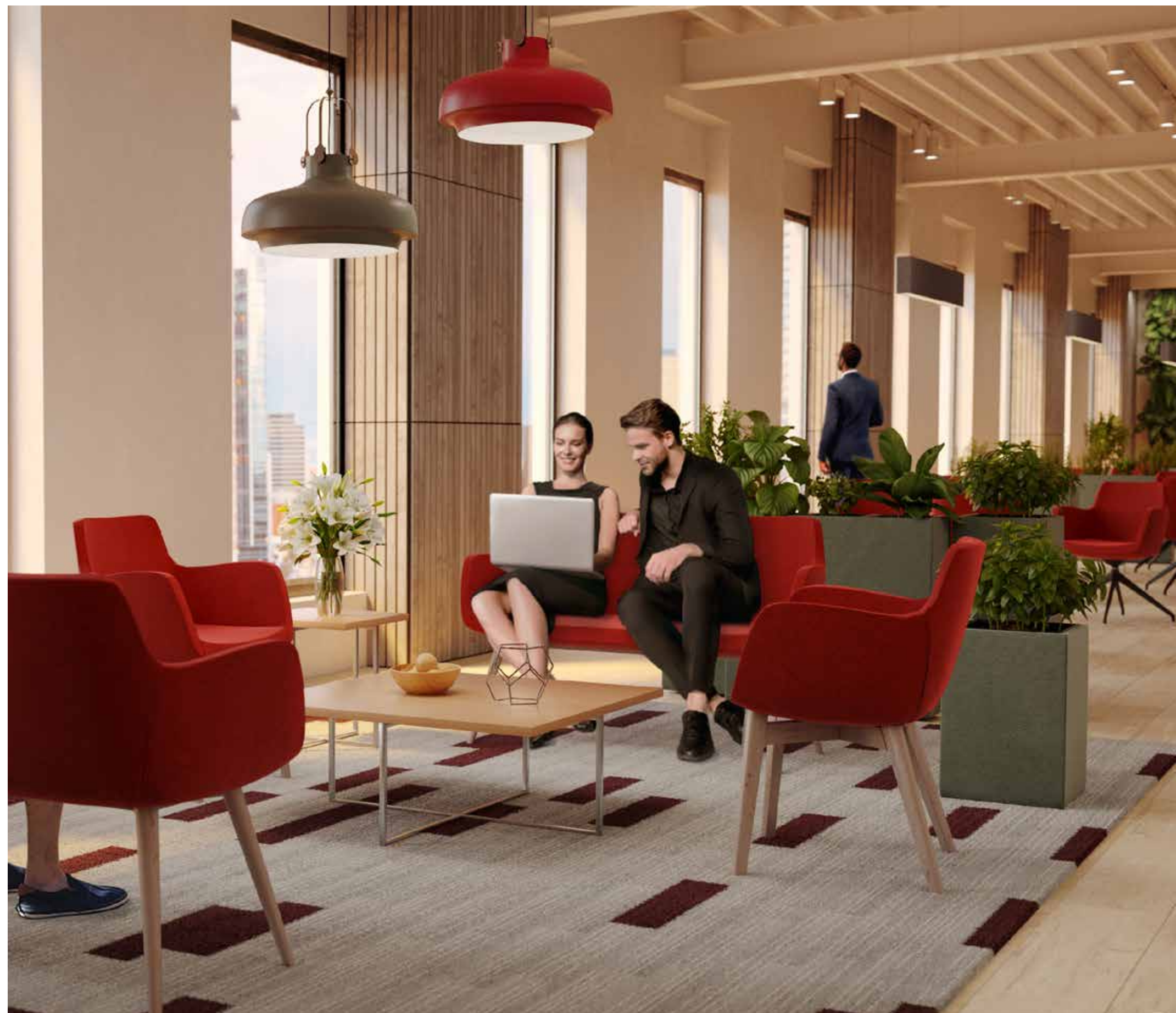


# ZOE MOODLII

Whether as a conference, hotel or restaurant chair as well as a chair for guests - Zoe meets all the requirements set for it. The latest technologies used in production, as well as fresh contemporary design, puts Zoe at the forefront of this type of products. The attractive design of the injected foam bucket is available in a wide variety of bases, both based on wood, metal and aluminum. Thanks to its multifaceted nature, it can be used in interiors of various types.



**Options**  
Armchair, sofa and Sofa Swing





# MISHELL

---

It enhances the professional set up of open space offices as well as lounges, receptions, restaurants and conference rooms. Wherever you place Liner furniture, you will create a pleasant, separated space, ideal for discussions or relaxation. The use of high backrests as well as soundproof materials allows for better acoustic comfort for Liner users



**Options**  
Chair, armchair, XL armchair, stool and footrest





# MISHELL SOFT

---

The new version of upholstery has given the collection a more cozy character. It highlights the texture and type of fabric, emphasising the rhythm of the stitching pattern and bringing an eye-catching quality to the design.

With a wide selection of fabrics and bases, the elements of the collection can be freely customised depending on the intended purpose of the furniture.



## Options

Chair, armchair, XL armchair, stool and footrest







# JEN MOODLI

Three seater bench perfect for break out, reception and conference areas. Jen Moodlii is a fantastic addition to any open space where relaxed seating allows people to take a break or catch-up with colleagues in an informal environment.

**Features**  
Quilted fabric design  
Black modern peg style feet





# OOPS POUFFE

A comfortable round pouffe that is available in a range diameters and colours. Oops can be used for sitting, relaxing and as a convenient table. The pouffes are perfect for breakout areas in an office setting and can be complimented with a sofa or armchair.

**Top**  
Plain fabric or with Melamine Top.





# VOLT & SQUARE

Easily moved, the various shapes available make it possible to position them anywhere with a wide choice of configurations. They are perfectly suited to the modern decor of offices, stands at fairs, bars, exclusive shops and restaurants. The collection works especially well when creating friendly relaxation zones for employees.

**Options**  
Round, 90 degree, rectangular and Square.





# CHECK POUFFE

Different shapes from the Check range allow for any arrangement to suit your needs. The backrests fits perfectly into the seats and can be put on top or placed next to it. The perfect seating range for chillrooms, staff meeting rooms, reception or waiting rooms.

**Options**  
Seat, couche and backrest.



## CANTEEN & BREAKOUT

- ◎ BALWOO COFFEE TABLES
- ◎ CANTEEN BENCH
- ◎ H2
- ◎ LOFT COFFEE TABLES
- ◎ GATO LAPTOP STAND
- ◎ MISHELL TABLES
- ◎ SOVE COFFEE TABLES
- ◎ PICNIK TABLES
- ◎ CANTEEN SEATING
- ◎ TIME SEATING







## BALWOO COFFEE TABLES

These coffee tables offer a modern but minimal look with legs made of warm oak wood. Perfect addition to a break out area in a Canteen and can be paired alongside soft seating.

### Options

Round top with 3 legs, curved top with 3 legs and round top with 4 legs.





# CANTEEN BENCH

This range offers a selection of tables (high & low) with matching benches. The benches are also available with cushion for extra comfort.

**Options**  
High table, low table, bench and bench with cushion



# H2

The unusual shape of H2 tables breaks the office convention. They attract attention with the dainty, graphic form of the base. Minimalism is universal. The tables fill up and complement spaces with any aesthetic qualities, from modern to classic interiors. They easily match practically every type of seat. Despite their optical delicacy, the design of the tables retains the required rigidity, even with the application of tops of considerable sizes.



**Options**  
Square table - high & low version, Round table - high & low version, coffee table and conference table





# LOFT COFFEE TABLES

LOFT table tops are made of 18mm thick, double-sided MFC panel, finished with ABS edge. The frame is made of a steel rod with 12mm diameter, powder-painted in RAL colors from Wuteh sampler.

**Options**  
4 modern designs





# GATO LAPTOP STAND

The table fits perfectly as an assistant with sofas or armchairs. The size of the table top allows you to put a laptop or put away a tablet or phone.

**Available Sizes**  
400 x 550 x 670 mm  
550 x 400 x 670 mm



# MISHELL TABLES

Thanks to the rich palette of finish and colours to choose from, and an elegant form and sophisticated details, Mishell is a universal design that fits in perfectly in home settings, but also hotels or offices.



**Options**  
Large table with cantilever, wooden or cross base.  
Small table with wooden or cantilever base.





## SOVE COFFEE TABLES

A fusion of timeless design and functional elegance. Each piece is meticulously crafted to not only elevate your living space but also provide a focal point for gatherings and cherished moments. From sleek modern lines to classic artisanal touches, this collection offers a diverse range of styles and finishes to suit every taste and interior aesthetic.

**Options**  
5 desktop finishes



# PICNIX TABLES

The Picnix picnic table is a comfortable place for spontaneous meetings in the office. Picnix is undoubtedly a mobile and stable table. It can be supported on wheels or on legs, and comfortable upholstered seats along with a properly sized table encourage spending time in a pleasant atmosphere. Several people can sit at the Picnix table at the same time. It will be particularly useful in rooms such as a lobby, cafeteria, or open space.



**Options**  
With or without castors





# CANTEEN SEATING

Our canteen seating range is designed with attention to detail and high-quality materials, ensuring durability and long-lasting performance. Some of the range feature a stackable design that allows for easy storage and efficient space utilisation perfect for a canteen area.



Onda Seating



Filo Seating



Frill Seating



Nuke Seating





# TIME SEATING

Time is a beautifully designed armchair perfect for use as an executive office, board/meeting room or reception guest chair.

**Options**  
Meeting chair with or without arms.  
Meeting chair with 4 star base.  
4 legged stool.



# MEETING

🎯 KITO MEETING TABLES - CYLINDER BASE

🎯 KITO MEETING TABLES - PANEL BASE

🎯 C-SENSE MEETING

🎯 SOVE MEETING TABLES

🎯 KONTRAX TABLES

🎯 MORPH TABLES

🎯 BALWOO TABLES

🎯 CUBE

🎯 GEMINA

🎯 OQ

🎯 SANDY

🎯 NOMA

🎯 Y.88







Cylinder Leg Base

## KITO MEETING TABLES

The Kito meeting table collection can be used on its own or to match any of our desking ranges. Kito Meeting comes in a variety of shapes and sizes with a choice of metal base or classic panel base options.

### Options

- Round meeting table
- Ellipse meeting table
- Barrel meeting table
- Oval meeting table
- Rectangular meeting table





Panel Leg Base

## KITO MEETING TABLES

The Kito meeting table collection can be used on its own or to match any of our desking ranges. Kito Meeting comes in a variety of shapes and sizes with a choice of metal base or classic panel base options.

### Options

Oval meeting table  
Add-on section  
Round meeting table



# C-SENSE MEETING

The range comes in two main designs curved and rectangular. C-Sense meeting range is adaptable and can be used in any environment. The add-on elements allow you to add to the meeting table increasing the size!



**Options**  
Square meeting table  
Add- on section (one for both square and curved tables)  
Curved meeting table





# SOVE MEETING TABLES

A collection of modern tables that can be used in any office interior. Sove meeting tables are offered in 5 universal wood finishes and a modern silver frame. The tables are multi use and can be used in a canteen, conference room, meeting room or also as an office desk.

#### Options

Rectangular conference table  
High conference table  
Trapezoid conference table



# KONTRAX TABLES

A modern meeting table with a functional design that provides an excellent team meeting environment. The 25mm thick top, attractive silver coated box frame leg, makes the table suitable for boardrooms and conference rooms as well as other areas within the office.



**Sizes**  
1200 x 750 mm  
1500 x 750 mm



# MORPH TABLES

Morph is designed to combine maximum versatility and space saving functionality. Press to unfold, press to fold again for simple storage. This innovative design allows for easy transportation and storage, making it a great option for any office. Its sleek and modern look also adds a touch of style to any space.



**Options**  
Rectangular  
Semi Circle  
Trapezoidal  
90 Degree Corner Link







# BALWOO MEETING TABLES

These high tables offer a modern but minimal look with legs made of warm oak wood. Perfect addition to a Canteen area and are great paired alongside a comfortable stool.

**Options**  
7 top colours available





# CUBE

---

A stackable conference/meeting room chair with modern frame. Cube has a classic and simple yet stylish, practical design. Cube is suitable for meeting rooms, training room and waiting/reception areas.

**Frame Options**

Black  
White





# GEMINA

Gemina is available in three different versions including chrome frame, spider base and synchro mechanism. With a padded seat for comfort and perforated white plastic shell for breathability, it is ideally suited to office spaces.

#### Base Options

- Sled
- Spider
- castors





# OQ

---

The OQ series offers extreme comfort with its extra wide seat and armrests. The backrest is slightly arched for back support during long conferences and meetings. The chair is finished with a modern cantilever frame that will complement any interior. OQ is all stackable for a space-spacing and convenient solution.

**Backrest Options**

- High
- Mid
- Mid Mesh





# SANDY

A fully upholstered stackable meeting chair ideally suited to any area. The chair offers a sleek modern chrome frame along with black lacquered supportive armrests. Sandy is equipped to help you sit comfortable for long hours of meetings and conferences.

**Finish**  
Chrome frame  
Black arm detail



# Y.88

The Y.88 meeting chair offers responsive movement and real-time comfort suitable for a range of office environments. Y.88 offers an intuitive and adaptive seat slide which will help you maintain a good posture and help prevent any back or muscle pain.



Y.88 White / Grey



Y.88 Black





# NOMA

---

These modern meeting room chairs are aesthetically pleasing and are very comfortable. The fabric chairs will certainly make a great first impression within your boardroom and meeting rooms. You will find them to be compact in size but eminently suitable for even the longest meetings.

**Base Options**  
4-Leg Steel  
Nylon Spider  
4-Leg Steel Spider



# ACOUSTICS

- HIDE PHONE BOOTH
- HIDE ENLARGED PHONE BOOTH
- HIDE MEETING BOOTHS
- HIDE MINI BOOTH
- HUSHFREE PODS
- KOALA WORKSPACE DIVIDERS
- FLUFFO







## H1 PHONE BOOTH

A comfortable, modular phone booth for one person. It doesn't take up much space and fits into any office interior. It provides ideal conditions for making phone calls or teleconferences. A comfortable, modular phone booth for one person.




## H1+ ENLARGED PHONE BOOTH

This booth is designed for one person and offers ample space for making phone calls or working on a laptop. Equipped with a comfortable and spacious desk, it can easily accommodate a laptop, documents, a cup of coffee, and everything else you need to be productive.



# MEETING ROOMS

A comfortable, modular meeting room for two or four people. Its small dimensions ensure that it can fit into virtually any space, while the high level of sound insulation guarantees discretion during 1:1 meetings and provides a peaceful environment.

 [Click to find out more about Hide Meeting Rooms](#)



H2 Meeting Room for 2



H4 Meeting Room for 4



## MINI OFFICE

A spacious, modular office space to work. With HIDE mini office, you can enjoy peace and privacy, creating an ideal environment for individual work. Our cabin offers an oasis of silence in the midst of a noisy office, allowing you to focus and be productive without any distractions.





# HUSHFREE

HushFree delivers an exceptional user experience, thanks to its excellent acoustic design. With enhanced lighting conditions, hushFree enables extended hours for meetings, conversations, or focused work, all while maintaining the confidentiality of your discussions.

## Options

- hushFree S (Phone Booth)
- hushFree M (Medium sized meeting booth)
- hushFree L (Large sized meeting booth)





# KOALA WORKSPACE DIVIDERS

Koala workspace dividers are made using a lightweight PET acoustic panel, with an wide range of water-cut designs available to choose from. These dividers act as a physical division between spaces within offices or other rooms, whilst also introducing some added acoustic absorption to reduce reverberation. Dividers are suspended from the top directly into the ceiling.

**Dimensions**  
2400 x 1200 mm

**Koala Finishes**  
24 colour options





# FLUFFO ART

Fluffo Art is a small art piece. Available in a wide range of designs, colours and shapes. The entire collection will work well wherever the walls need a strong accent and the interior acoustics leave much to be desired. Offices, conference rooms, entrance areas, large open space offices, or long corridors are ideal for those large-format, acoustic panels.

**Dimensions**  
1100 x 1650 mm

**Finishes**  
9 colour sets





Fluffo 3D

# FLUFFO

Fluffo craft High-Quality Acoustic panels.

Fluffo offers exceptional quality and their collection of acoustic panels boasts an impressive array of colour options, shapes, and sizes, making it possible to find a suitable acoustic panel for any space.



Fluffo Air



Fluffo Izo



# FLUFFO

Fluffo craft High-Quality Acoustic panels.

Fluffo offers exceptional quality and their collection of acoustic panels boasts an impressive array of colour options, shapes, and sizes, making it possible to find a suitable acoustic panel for any space.



Fluffo Fire Resist



Fluffo Web



Fluffo Soft



# RECEPTION DESKS

SOVE

ASHFORD

LIBRA

LINUS







Sove Reception

# RECEPTION DESKS

Selecting a reception desk that creates a positive first impression is crucial for any workspace. We offer an extensive range of styles that cater to various settings.

Our reception desks are designed to provide ample workspace and storage solutions, intended to support a reception team in managing the demands of customers with ease while maintaining an organised workspace. Our collection includes small reception desks and modern reception desks that come in a variety of colours!



Libra Reception



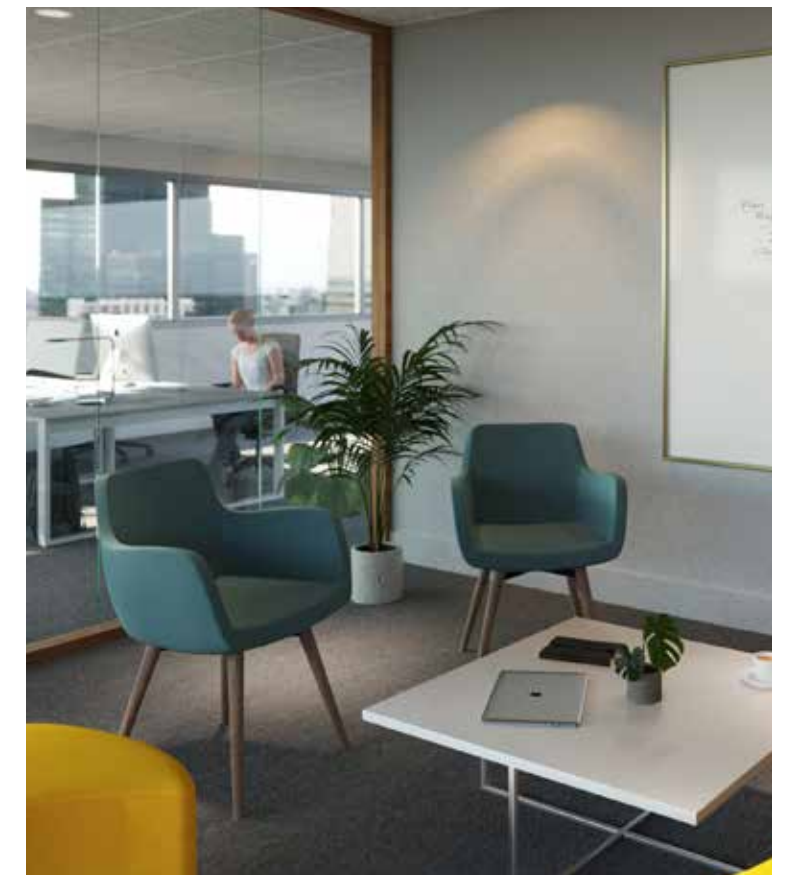
Ashford Reception



Linus Reception

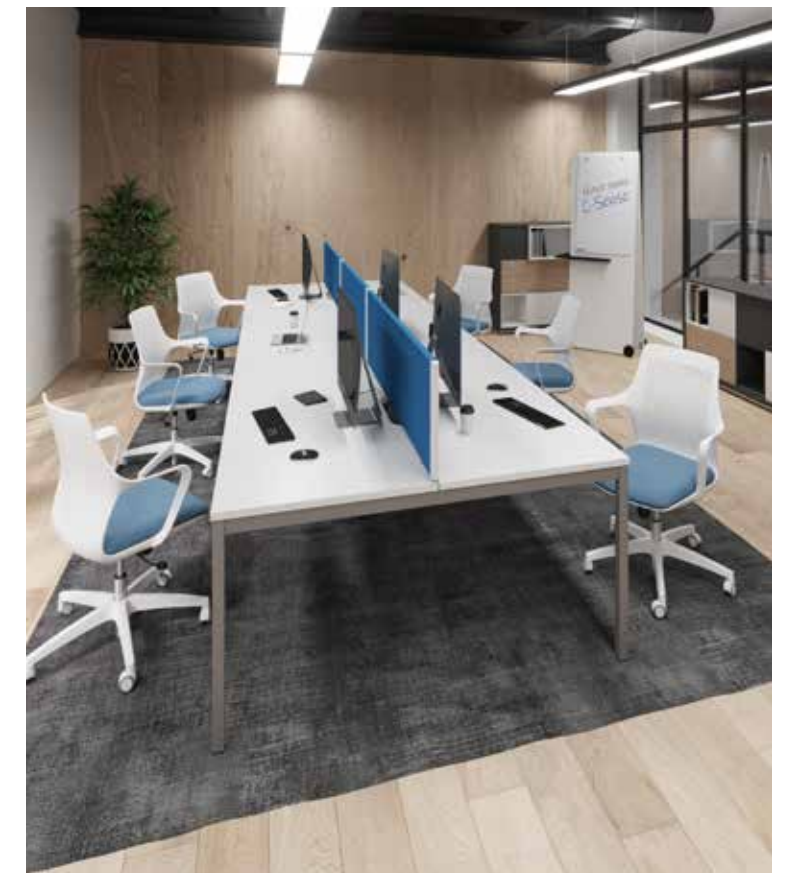


# COLOUR INSPIRATION





# COLOUR INSPIRATION



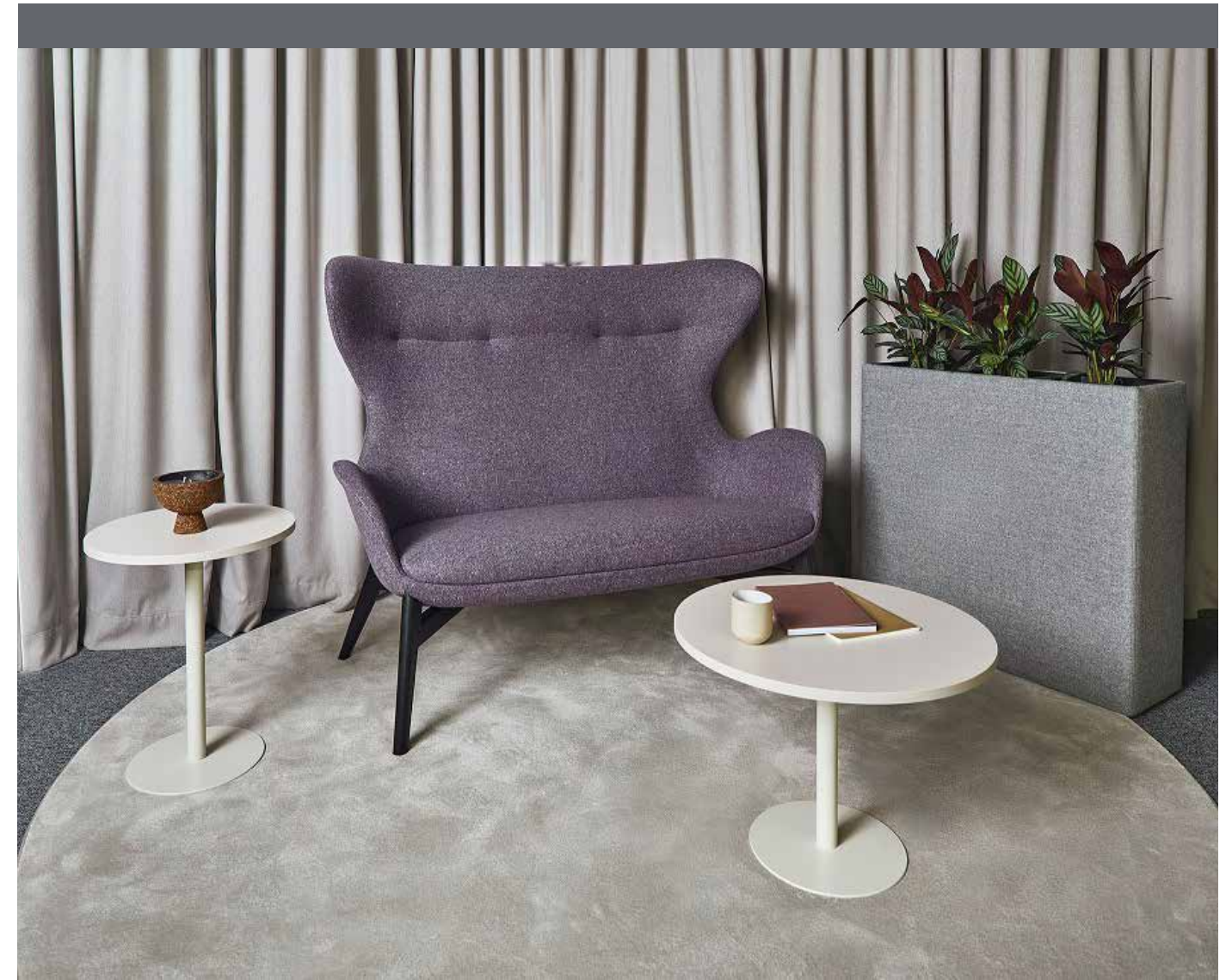


# COLOUR INSPIRATION





# COLOUR INSPIRATION







**HARROGATE (HEAD OFFICE)**

Unit C2, Crimple Court, Hornbeam Park Harrogate, North Yorkshire, HG2 8PB

**ABERDEEN**

Unit 4C, Broadfold Business Centre, Broadfold Road, Bridge of Don, Aberdeen, AB23 8EE

**BRISTOL**

Unit 1, Blackfriars Industrial Estate, Blackfriars Road, Nailsea, BS48 4DJ

**EDINBURGH**

Units M & N, Burnhouse Industrial Estate, Whitburn, West Lothian, EH47 0LQ

**HENLEY**

Unit 10, Thames View Industrial Estate, Newton Road, Henley-on-Thames, RG9 1HG

**LAKE DISTRICT**

Unit 2, Andrews Court, Andrews Way, Barrow in Furness, LA14 2UE

**LOCKERBIE**

Old Wool Mill, Sydney Place, Lockerbie, DG11 2JA

**LONDON**

Building Centre, 26 Store Street, London, WC1E 7BT